

Report to: Public Engagement Board

Date: 10/03/2021

Report of: COVID-19 Programme Team

CLT Lead: Eleanor Roaf, Director Public Health Trafford

Report Title: Data surveillance update paper to Public Engagement Board

Report Summary:

This paper provides an update on the current data position for COVID-19 within Trafford and provides comparative information with other GM localities. Data insights into any potential trends are provided based on best available public health information and intelligence available.

Overview of the current position

- Over the most recent 7-day period (25/02-06/03) we have seen a reduction in the number of cases of Covid-19 in Trafford
- There were 159 confirmed cases in Trafford during the week of February 25 – March 03, a rate of 67.0/100,000 residents. The highest number of cases on a single day was on Thursday February 25th, with 40 cases.
- Rates are decreasing more slowly in Greater Manchester than in England as a whole. Trafford has the lowest rate within GM.
- Fewer people went for a test in the last week, but our positivity rate has also fallen and is now 4.6%.
- Rates have dropped in all age groups, with only our 20-29 year olds having rates over 100/100,000 population.
- Rates in people aged 65+ are 43.7/100k, down from 65.7/100k from the previously reported week (18/02-24/02).
- Cases remain spread across the borough, but only two wards (Bucklow-St Martins & Broadheath) have rates over 100/100k, and nine of our 21 wards have rates below 50/100k.
- We continue to see new workplace outbreaks, although the size of the outbreaks are much smaller than previous weeks. We would urge all businesses to increase their efforts to make their workplaces covid secure and to encourage their staff to work from home wherever possible. The increased infectivity of the new strain means that all precautions need to be rigorously applied to minimise spread.
- As we start to see pupils return to school, we are likely to see an increase in case rates as a result of increased social mixing. We would not expect to see the increase to

show for 10 days or so. It is critical that people do not see the return of children to school as a green light for increased social activity.

- Over 90% of residents in the 1-4 priority groups have been vaccinated, whilst over 95% have been vaccinated in residents aged 75 or over.
- We are still seeing inequalities in vaccine uptake with lower uptake in some of our less affluent areas and in some BAME groups. These populations have suffered badly in the pandemic so increasing uptake across the whole of Trafford is essential if we are to limit further harm.
- We need to ensure that more people are confident in the safety and effectiveness of the vaccine, as well as making sure that vaccination sites are easily accessible, including to people who do not have private transport.

Although our rates are dropping, we would like to emphasise the need for residents to continue to limit their social contacts, maintain social distancing, and keep good hand and respiratory hygiene habits at all times. It is especially important that residents continue to work from home wherever possible, and in particular the opening of schools should not be seen as an opportunity for people to start going into work. People should continue to work from home wherever possible.

Further progress has been made within the vaccination programme. In addition to the high percentage of residents within the 1-4 priority groups being vaccinated, almost 90% of residents aged 65-69 have now been vaccinated, and the programme has now been opened to everyone aged 56 or over. The vaccine is very safe, and there is increasing evidence that it not only prevents serious illness but also reduces transmission of the virus. We strongly encourage people to accept the offer of vaccination and thereby protect themselves and others.

Contact Officer:

Name: Tom Seery, Public Health Data Surveillance Analyst

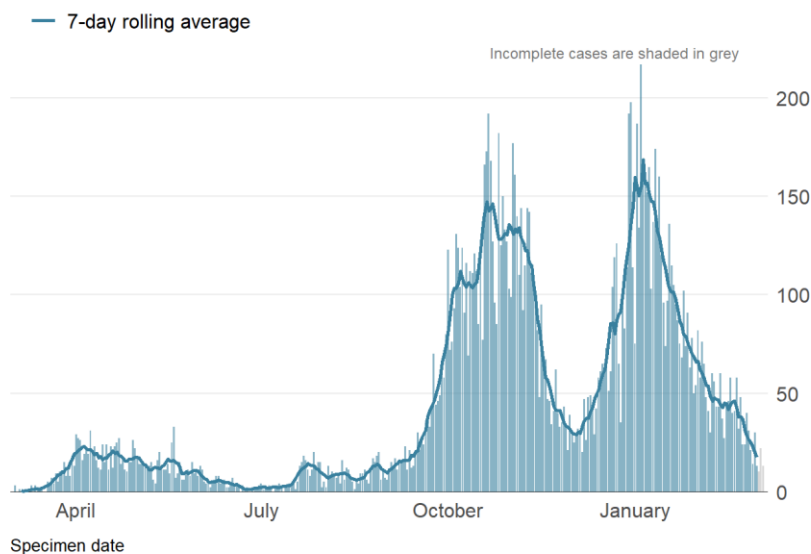
Tel:

Email: Thomas.Seery@trafford.gov.uk

1.0 Distribution of COVID-19 cases within Trafford

1.1 During the week 25 February – 03 March, there were a total of **159** confirmed cases in Trafford, equivalent to a rate of **67.0** per 100,000 residents.

- 1.2 Below (figure 1) is the epidemic curve for Trafford, indicating the total number of confirmed cases and 7-day rolling average since March 2nd.
- 1.3 The rise in daily cases since the end of August is represented by the sharp rise in the 7-day rolling average; indicating that total cases per day have consistently stayed high throughout the month of September, going into October.
- 1.4 Throughout the first two weeks of October daily cases started to level out, however since week beginning October 19, Trafford experienced a sharp rise in daily cases, mostly greater than 150 confirmed cases per day. A subsequent sharp drop in cases followed October's high case rates, hugely influenced by the national lockdown measures.
- 1.5 Early December saw a gradual increase in cases, rising more sharply near the end of the month and going into early January.
- 1.6 Trafford's cases started to drop following the national lockdown. We started to see case rates stall over a 14-day period in mid-late February, however we are now starting to see a reduction in Trafford's case rate.



Source: PHE Covid-19 Situational Awareness explorer

Figure 1. Epidemic curve of daily confirmed new cases
Trafford, 02 March to 05 March 2021

- 1.7 As of week ending March 03, we are seeing less variation in Trafford's age-specific case rates, and including in Trafford's 65+ age group. Current case rates (43.7/100k) have dropped from the previous 7-day period (65.7/100k).

1.1 For Trafford's older population, we were seeing slightly higher rates in residents aged 80 years and over, however we have also see rates reduce for this age group over the past 7 days, currently at 65/100k.

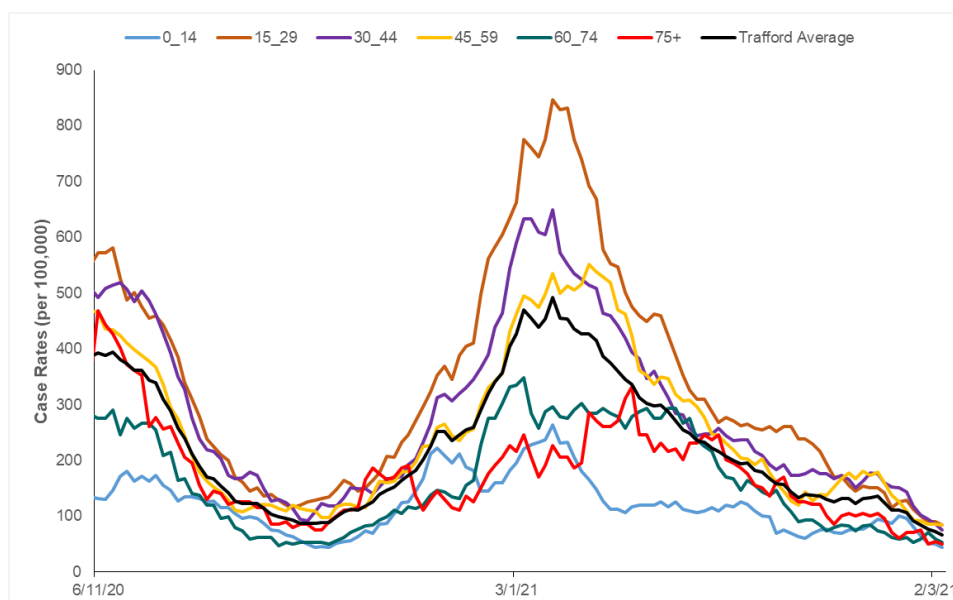


Figure 2. Age-specific case rates per 100,000

Trafford, 7-day moving average

1.10 Trafford's 'White' ethnic group, as of week ending March 03, contribute to the highest number of cases (**210**), followed by the 'Asian / Asian British' ethnic group (**32**).

Table 1. Case count and incidence per 100,000 population by ethnicity

Trafford, 25 February to 03 March 2021

Source: PHE Daily COVID-19 Surveillance Reports

Cases in last 7 days		
Ethnic group	n	Per 100,000
Other	-	136.4
Black / Black British	6	91.7
Asian / Asian British	12	66.8
White	112	57.8
Mixed	-	49.7

(numbers under 5 suppressed)

2.0 Geographical spread of COVID-19 in Trafford

2.1 As is expected as case numbers drop, we are seeing volatility in the rates by ward. We have seen reductions in 19 of our 21 wards over the most recent week (25/02-03/03).

2.2 There are currently only two wards (Bucklow-St Martins & Broadheath) with rates over than 100/100k, and 9 wards have rates below 50/100k.

2.3 We are seeing slightly higher rates in the West of the borough, predominantly as a result of higher case rates in the ward of Bucklow-St Martins (180.5/100k).

3.0 Testing in Trafford

3.1 Over the 7 day period ending March 06, the majority (**89.3%**) of COVID tests were conducted in our pillar 2 sites, consisting of all out-of-hospital testing sites.

3.2 As of 3rd March, Trafford's 7-day positivity rate is **4.6%**, above the England average (**3.8%**).

4.0 Comparative data of COVID-19 cases within the local authorities of Greater Manchester

4.1 As shown in Figure 3 each of GM's boroughs is seeing reductions in rates, after a stalling in the decline previously.

4.2 As of 4th March, Trafford has the lowest 7-day incidence rate in Greater Manchester.

4.3 The grey line in figure 3 shows that rate reduction is much slower for GM than it is for the England average.

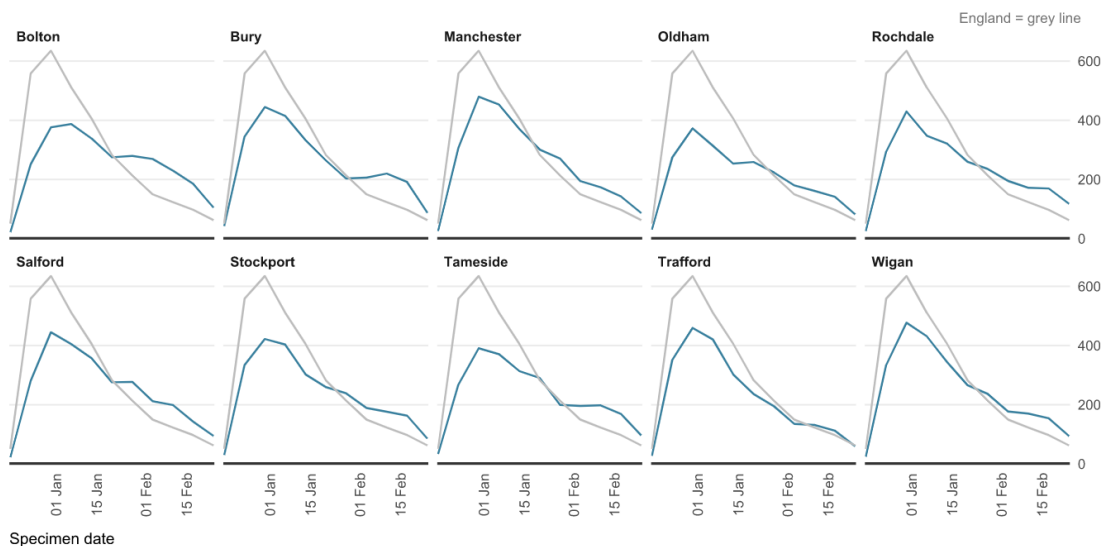


Figure 3. Weekly incidence per 100,000 population by local authority
Greater Manchester, 26 December to 04 March 2021